

# NNS241

## Inverted Polyamide Filter Housing

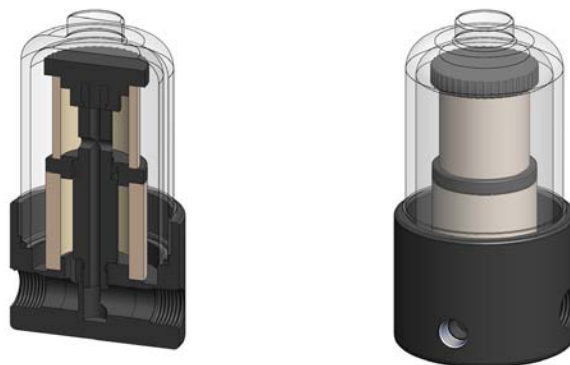
<b>Materials</b>	<b>Polyamide</b>
<b>Pressure</b>	<b>7 Bar</b>
<b>Ports</b>	<b>1/8" &amp; 1/4"</b>
<b>Element</b>	<b>25.30.□ &amp; 25.35.□</b>

NNS filter housings are constructed from polyamide and the bowl also uses a clear polyamide.

The housings are fitted with a coalescing pre-filter and a particulate filter that are of different lengths making incorrect installation impossible. The short bowl gives a low internal volume for fast response times.

The housing is designed so the ports and drain connection are all arranged in the head. This means that the drain does not have to be disconnected to change the filter element.

Standard housings have NPT ports and Viton seals.



## Technical Specifications

Housing Model	NNS241.111	NNS241.211
Port Size	1/8" NPT	1/4" NPT
Drain	1/8" NPT	1/4" NPT
Maximum Pressure, Bar	7	7
Maximum Temperature, °C	50	50
<b>Materials of Construction (1)</b>		
Head, Bowl & Internals	PA	PA
Seal (2)	Viton	Viton
Filter Element Code - 1st Stage (3)	25.35.□	25.35.□
Filter Element Code - 2nd Stage	25.30.□	25.30.□
<b>Principal Dimensions in mm</b>		
Diameter	62	62
Height	108	108
Volume, cc	115	115
Weight, kg	0.2	0.2

### Notes

(1) Material abbreviations, PA = Polyamide

(2) Add suffix for other seal types, Chemraz = .C, Nitrile = N, Kalrez = .K, EPDM = .E, Silicone = .S, (e.g. NNS241.211.E)

(3) Replace the □ with the grade required, e.g. 25.35.8CK, 25.30.6K