

# SM015

## SP76 Modular Membrane Housing

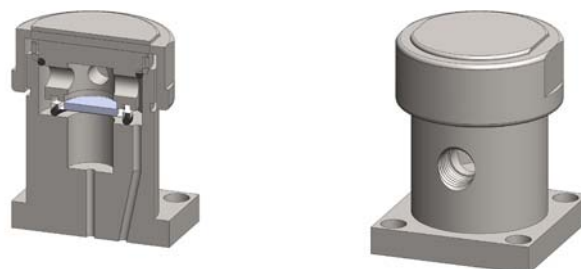
**Materials** 316L SS  
**Pressure** 100 Bar  
**Ports** SP76 & 1/8"  
**Membrane** MT.19.□

The SM015 series SP76 membrane housings are designed for SP76 compliant modular sample systems. The housings use a porous PTFE membrane which is supported by a sintered porous stainless steel disc on the outlet side.

Any liquid in the sample will flow to the 1/8" NPT drain port. The housings should only be used on substrates that are mounted in the horizontal plane with the drain port at the lowest point below the inlet and outlet ports.

The housing design allows a quick change of the membrane as all the line connections are arranged in the body of the housing and the threaded cap means no tools are required for access.

The housings are free from welds and comply with NACE MR-01-75 and are CE marked in accordance with PED 97/23/EC.



## Technical Specifications

| Housing Model                        | SM015.L11     | SM015.R11     |
|--------------------------------------|---------------|---------------|
| Inlet/Outlet Connections             | SP76          | SP76          |
| Drain                                | 1/8" NPT      | 1/8" NPT      |
| Maximum Pressure, Bar                | 100           | 100           |
| Maximum Temperature, °C (1)          | 150           | 150           |
| Flow Direction                       | Left to Right | Right to Left |
| Substrate Plane                      | Horizontal    | Horizontal    |
| Inlet                                | Hole 2        | Hole 2        |
| Outlet                               | Hole 3        | Hole 1        |
| <b>Materials of Construction (2)</b> |               |               |
| Head, Bowl & Internals               | 316L SS       | 316L SS       |
| Seals(3)                             | Viton         | Viton         |
| Membrane Code (4)                    | MT.19.□       | MT.19.□       |
| <b>Principal Dimensions in mm</b>    |               |               |
| Diameter                             | 38            | 38            |
| Height                               | 48.5          | 48.5          |
| Volume, cc                           | 5             | 5             |
| Weight, kg                           | 0.3           | 0.3           |

### Notes

(1) Above 200°C the pressure rating is reduced, consult us for the exact rating at any specific temperature

(2) Material abbreviations, 316L SS = 316L Stainless Steel

(2) Add suffix for other seal types, PTFE = .T, Chemraz = .C, Nitrile = N, Kalrez = .K, EPDM = .E, Silicone = .S, (e.g. SM015.L11.T)

(3) Replace the □ with the grade required, e.g. MT.19.M2