

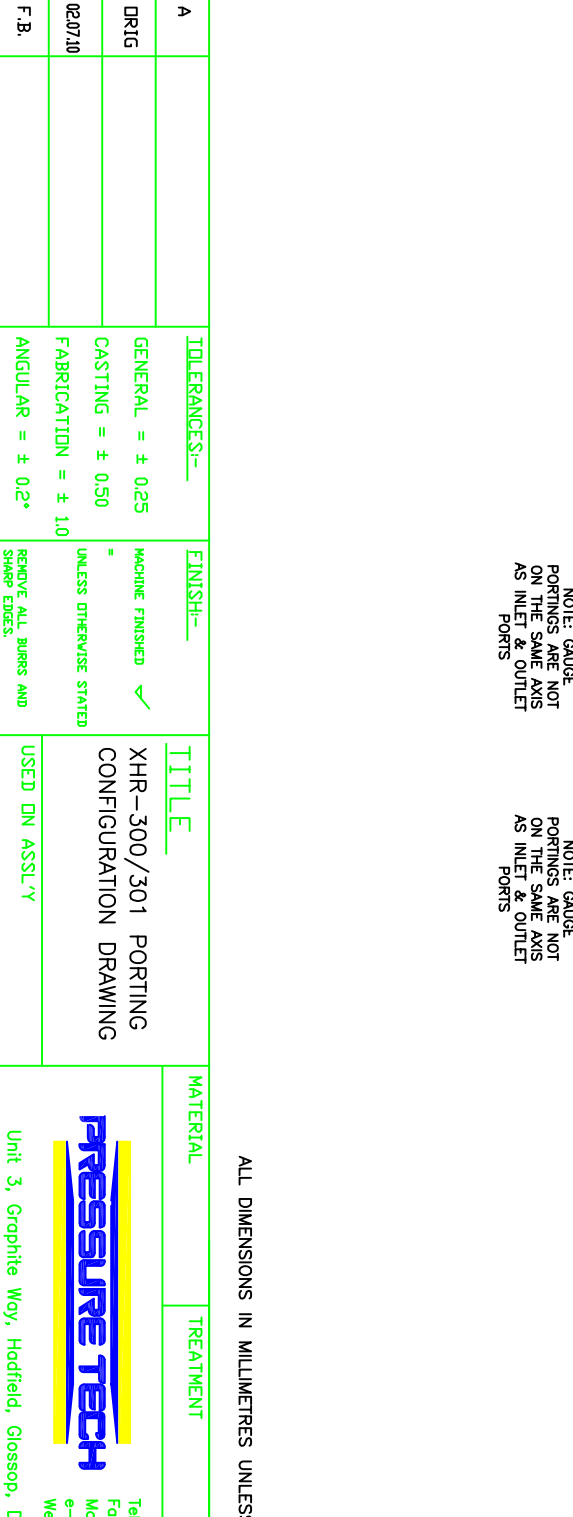
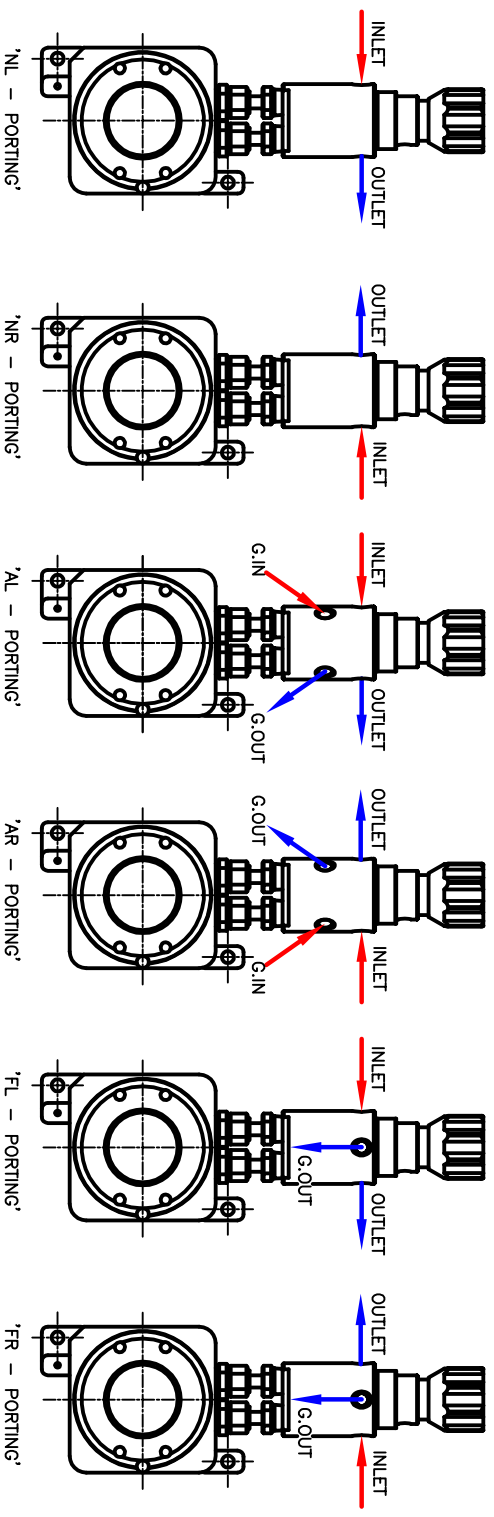
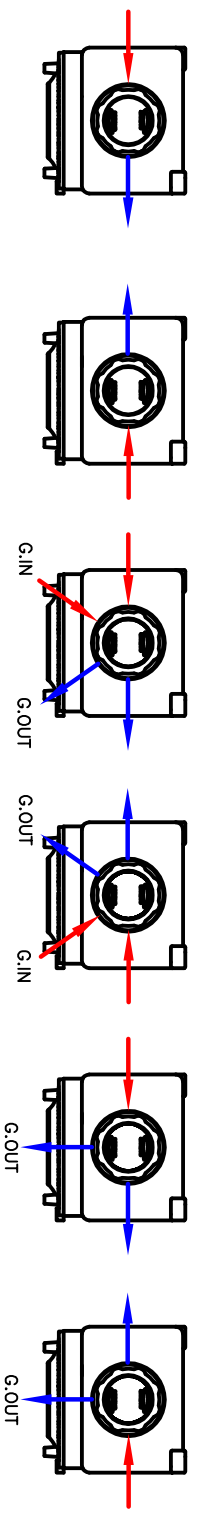
DCD103/003RHX-A2
DRG. No.

DD NOT SCALE

THIRD ANGLE PROJECTION

IF IN DOUBT - ASK!

THIS DRAWING IS THE PROPERTY OF PRESSURE TECH 2000 LTD., AND MUST NOT BE WHOLLY OR PARTLY REPRODUCED NOR DISCLOSED TO A THIRD PARTY NOR USED FOR ANY PURPOSE WITHOUT THE WRITTEN CONSENT OF THE COMPANY.



ISSUE		A		TOLERANCES:-		FINISH:-		TITLE		MATERIAL		TREATMENT		SCALE		DRAWN		F.B.		02.07.10	
C.N. No.		DRIG		GENERAL = ± 0.25		MACHINE FINISHED ✓		XHR-300/301 PORTING CONFIGURATION DRAWING								CHECKED					
DATE		02.07.10		CASTING = ± 0.50		UNLESS OTHERWISE STATED		USED IN ASS'Y								APPROVED					
SIG.		F.B.		FABRICATION = ± 1.0		REMOVE ALL BURRS AND SHARP EDGES.										DRG. NO.					
				ANGULAR = ± 0.2°												A2-XHR300/301PCD					

ALL DIMENSIONS IN MILLIMETRES UNLESS OTHERWISE STATED.

© COPYRIGHT OF PRESSURE TECH 2000 LTD.

PRESSURE TECH

Unit 3, Graphite Way, Hadfield, Glossop, Derbyshire, SK13 1QG

Tel 01457 899307
 Fax 01457 899308
 Mobile 07808 171741
 e-mail info@pressure-tech.com
 Web www.pressure-tech.com